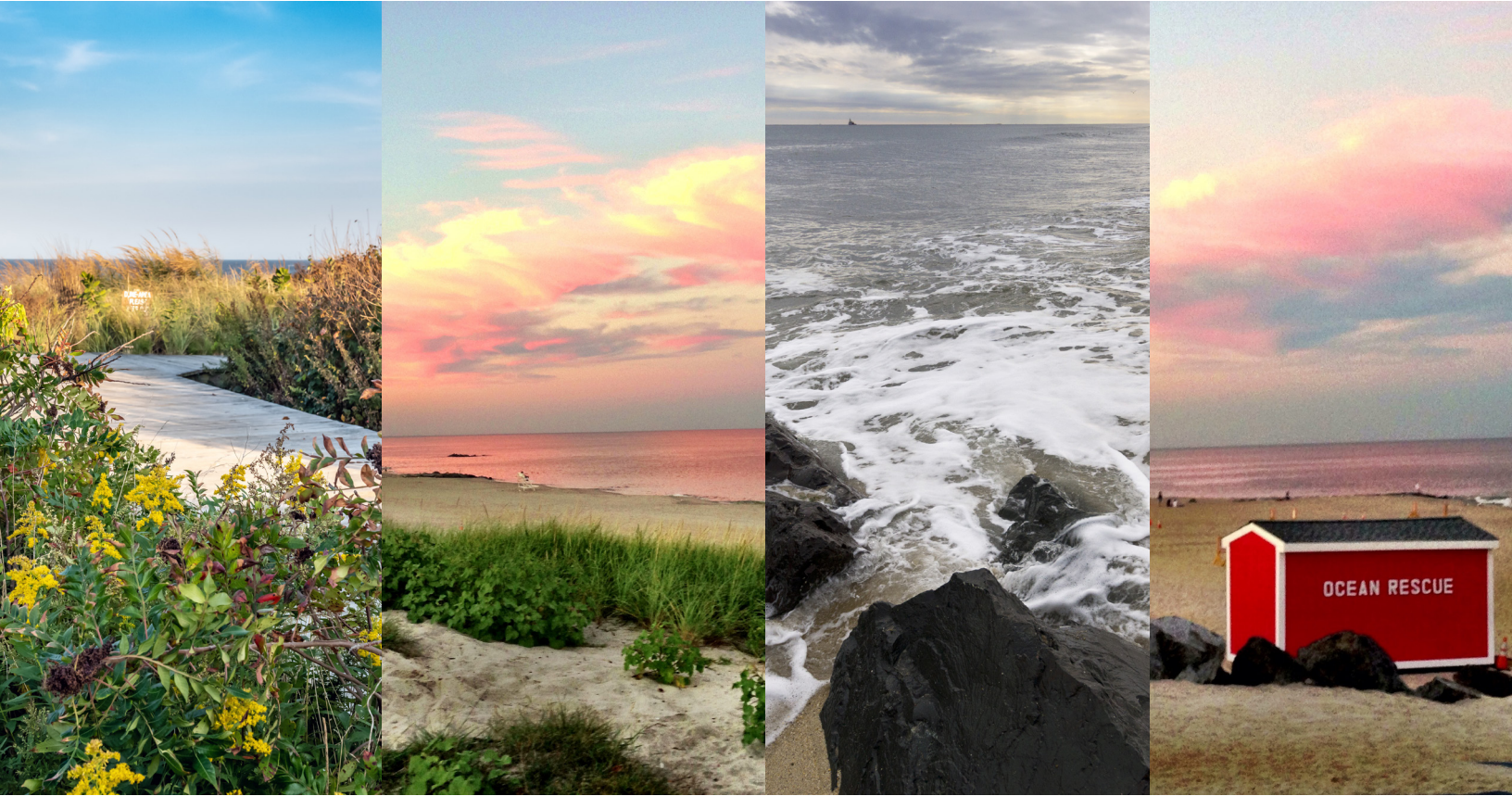


YOUR HEALING JOURNEY *Begins Here*



Life Celebration® **Family Guide** by Woolley-Boglioli Life Celebration® Home

We are honored that you have chosen Woolley-Boglioli Life Celebration® Home to take care of your loved one. It is our mission to not only serve your family but to also help you begin to find a sense of peace and healing.

This is your Family Guide. We ask that you look through this guide and begin to share the story of your loved one with us. We will use this guide to learn about your loved one and to help us plan personalized touches within their Life Celebration.

“YOU MAY BE *Gone From* MY SIGHT,
But Are Never Gone
FROM MY HEART”



01 SHARING

How do you want your loved one to be remembered? **We are here to help you tell their story.** By sharing memories and information within this guide, you will help us begin to get to know your loved one so that we can begin to co-create your loved one's Life Celebration®. It is our mission at Woolley-Boglioli Life Celebration® Home to guide you through this experience and to help you begin to heal.



02 CREATING

It is our **passion to create unique and personalized memorial tributes.** We will incorporate all of the details you include within this family guide into your loved one's services. Please provide us with up to 25 photos that are representative of the span of your loved one's life. Bring them in with you for the arrangement conference or a few days before the service. You can also share the images with us digitally via email. We are here to help you every step of the way.



03 CELEBRATING

We encourage our families to celebrate the life of their loved one. **The love of our family and friends who have passed away does not leave us.** Love lives on through memories and stories shared. We will celebrate the life of your loved one with personalized touches and unique tributes centered around your loved one's unique life.

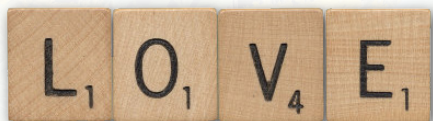
SHARE SOME MEMORIES OF YOUR LOVED ONE.

TELL US ABOUT
YOUR LOVED ONE'S
**LIKES, HOBBIES,
INTERESTS AND
PASSIONS**





WHAT WILL ALWAYS REMIND
YOU OF YOUR LOVED ONE?
(**SCENT, RECIPE, PHOTOGRAPH,
MOVIE, PLACE, ETC.**)



WHAT ARE A FEW **WORDS** THAT
DESCRIBE YOUR LOVED ONE?

SHARE YOUR LOVED
ONE'S **SERVICE TO
COUNTRY, THEIR
LIFE'S WORK, AND/
OR THEIR CAREER
HIGHLIGHTS**



TELL US ABOUT YOUR
LOVED ONE'S **RELIGIOUS OR
SPIRITUAL CONNECTIONS**

“Where  
Words Fail, „
MUSIC SPEAKS

SHARE SOME OF YOUR
LOVED ONE'S **FAVORITE SONGS,
ARTISTS, OR HYMNS**



HEALING ACTIVITIES



JOURNEY OF LIFE AND LOVE

Remembering that love goes on after death, share some ways your loved one will remain with you as you continue on your journey and heal.



BUILDING A SUPPORT BRIDGE

Healing begins with family and friends. List below your loved ones who you can lean on in your time of need, as well as places to visit, reflect, and remember.



A FOCUS ON THE FUTURE

Envision a day when you can peacefully and joyfully reflect on the life of your loved one. It may be too painful now, but the pain will gradually lift. What does this day look like to you?

SCHOOLING, CHURCH, HOBBIES



WELCOME TO YOUR PATH
TOWARDS HEALING.



GOLDEN YEARS

GRANDCHILDREN, TRAVEL, VOLUNTEERING



GOOD OLD DAYS

FAMILY, TRADITIONS, HOLIDAYS



LIFE'S WORK

CAREER, ACHIEVEMENTS, PASSION



THE BEGINNING

CHILDHOOD, SIBLINGS, FRIENDSHIPS

